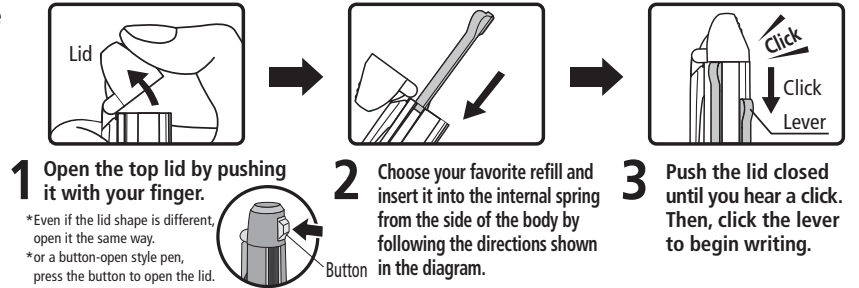


# Multifunction writing instrument HI-TEC-C COLETO / Use and Care Guide

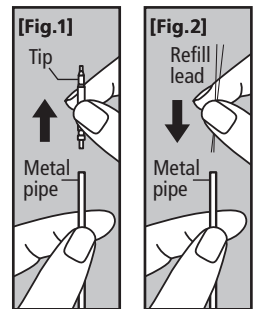
## How to use

- The body and refill are specifically designed for the HI-TEC-C COLETO. These are not compatible with other products.
- To replace the refills, remove the top cap.
- As for the refill, please use the PILOT HI-TEC-C COLETO.
- Before using the gel ink ballpoint pen refill, remove the resin ball covering the tip.



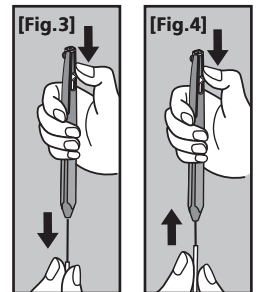
## How to refill a mechanical pencil with new lead

- (1) Remove the mechanical pencil unit from the COLETO body.
- (2) Turn the tip of the mechanical pen unit upward. Hold the metal pipe securely, then pull to remove the tip. **[Fig.1]**
- (3) Insert the replacement lead into the metal pipe. You can insert up to three lead refills. Inserting more than three lead refills may cause jamming. **[Fig.2]**
- (4) Reattach the tip to the metal pipe. Insert the tip all the way until it reaches the end.
- (5) Reattach the mechanical pen unit to the body to complete the lead refill process.



## How to replace the eraser

- (1) Replace the eraser while keeping the eraser unit in the COLETO body as shown in the right diagram.
- (2) Press the eraser unit lever, then pull out the used eraser along with the thin plastic core while holding the lever. **[Fig.3]**
- (3) While holding the lever, insert a new eraser from the side of the plastic core. In this process, insert the eraser all the way until it reaches the end. **[Fig.4]**
- (4) Release the lever to complete the eraser replacement process.



## Remarks

### <Caution regarding the gel ink ballpoint pen refill>

- Please do not use this product for any purpose other than writing.
- Keep away from children.
- To prevent ink leakage, never write with the pen tip upwards.
- Avoid severe impacts from hard shaking because the ink may leak.
- Always retract the writing tip after use.
- Note that it may not be possible to remove this ink if it accidentally gets on your clothes.
- Do not store in places exposed to direct sunlight or high temperatures.
- Hold the touch pen upright while using it and avoid applying too much pressure when writing.

### <Caution regarding the mechanical pen unit 0.3 mm/0.5 mm / How to add lead refills>

- Please do not use this product for any purpose other than writing.
- Handle with care because the point is sharp.
- Keep away from children.
- Avoid applying excessive force to the joint between the lever and the metal pipe.
- Please only use genuine PILOT refill leads (0.3 mm/0.5 mm).

### <Caution regarding the eraser unit / How to replace the eraser>

- Please do not use this product for any purpose other than erasing writing.
- Keep away from children.
- Avoid applying excessive force to the joint between the lever, resin pipe, and the metal pipe.
- The eraser is attached to a thin plastic core, so please handle with care.
- When using the eraser, extend it about 2 mm from the body. Keeping the extended part of the eraser out too long may cause it to break.
- Clicking the eraser unit may become difficult when it is used in a two-color pen body.
- After each use, remove any eraser dust from the tip and return it to the pipe before storing.
- The compatible eraser refill is the **LHKRF-15ERF**.