



S30 is a mechanical pencil with an automatic system that extends the lead automatically without clicking.

(1) When using this pen, maintain a light writing pressure.

Writing with excessive pressure places a significant load on the internal mechanism, causing the lead to sink.

(2) Avoid clicking more than necessary.

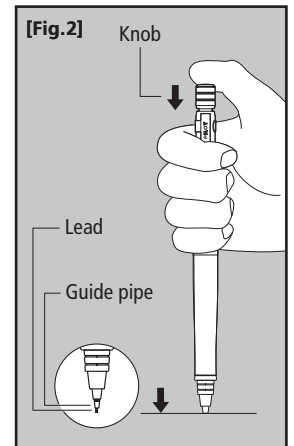
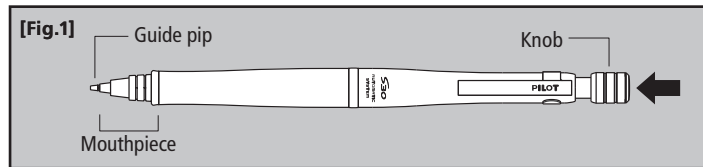
Since the S30 features an automatic mechanism that eliminates the need for clicks, clicking too often can weaken the grip on the lead, causing it to sink.

(3) To retract the lead after use, press the knob (click part) firmly before retracting the lead.

Attempting to retract the lead without firmly pressing the knob may damage the internal mechanism.

How to use

- Press the knob once and expose the guide pipe. **[Fig.1]**
- The lead extends automatically until a piece of lead finishes when writing without exposing the lead from the guide pipe.



- (* The automatic system does not operate when writing with the lead exposed.)
- To retract the lead exposed from the guide pipe, push on the lead end while pressing the knob.
- To refill the lead, remove the knob and eraser, and put new lead refills into the lead reservoir.
- The lead reservoir is designed to hold a maximum of six lead refills. If too many lead refills are inserted, some lead refills may not properly pass into the guide pipe.
- When first use after refilling lead refills, press the knob a few times until the lead appears from the guide pipe.
- After use, while pressing the knob as above right, push the guide pipe onto paper to retract. **[Fig.2]** (This locks the automatic system.)

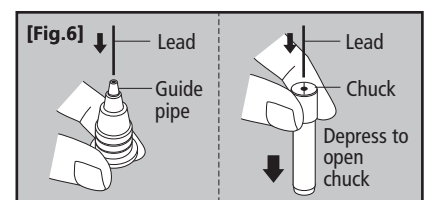
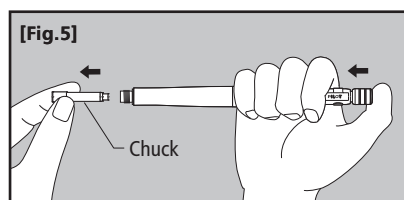
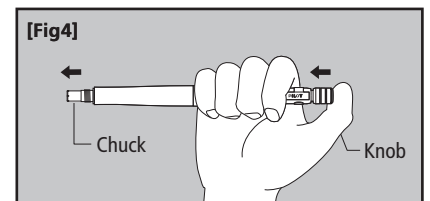
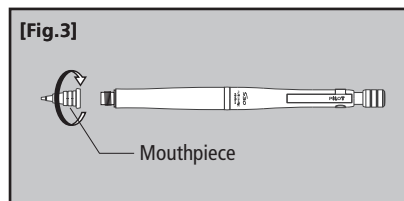
When the guide pipe recedes during writing

Click the knob once. If the guide pipe continues to retract, it indicates that there is a little lead left. Press the knob to remove the short lead from the guide pipe. Continue pressing the knob until the new lead emerges from the guide pipe.

How to clear a lead jam

If a new lead in the reservoir does not extend properly, disassemble the pen following the procedures below to clean the mouthpiece, chuck, and other parts.

- (1) Turn the tip to the left to remove. **[Fig.3]**
- (2) Press the knob and remove the chuck. **[Fig.4]**
- (3) Pull out the chuck while pressing the knob. **[Fig.5]**
- (4) Remove the stuck lead in the tip or chuck by pushing it with another lead refill. **[Fig.6]**
- (5) To re-assemble the pen, follow the disassembly procedures in reverse. Please take extra care while assembling.



Refill lead and eraser

- Use PILOT lead refills.
- Eraser refills (HERFS-10) are also available.

Remarks

- Please do not use this product for any purpose other than writing.
- Handle with care because the point is sharp.
- Do not swallow the parts, such as the knob, eraser, and mouthpiece.
- Keep away from children.
- Do not store in places exposed to direct sunlight or high temperatures.