

## Mechanical Pencil / Use and Care Guide

PILOT mechanical pencils are available in the Click type, Fure Fure and Click type, Guide Pipe Slide Type, and Cap Slide Type. The Click Type includes the Knob Click type, Cap Slide Type, and Clip Slide Type. Please refer to the instructions applicable to the mechanical pencil you purchased.

### Knob Click, Cap Slide, and Clip Slide Type

#### ● For writing

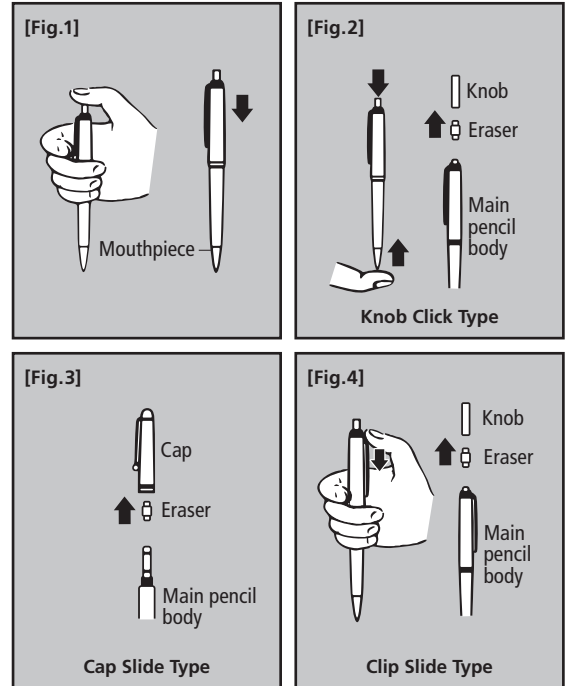
- (1) Turn the tip downward and press the knob (or cap or clip) to extend the lead. [Fig.1] and [Fig.4]
- (2) When one lead is finished, press the knob (or cap or clip) repeatedly until the new one comes out.

#### ● After writing

The lead can be retracted by gently pushing the top while pressing the knob, cap, or clip. [Fig.2]

#### ● To refill lead

Remove the knob (or cap) and the rubber eraser. Put the new lead into the lead reservoir. [Fig.2], [Fig.3], and [Fig.4]



### Terminal Chuck Type

#### ● Even the final 1 mm of lead can be used completely with this type.

- \* It is used in the same way as other click types.
- \* The tip is bonded and should not be removed by force.

### Shaker and Click Type

The lead can be extended in two ways: by clicking the knob or shaking the pencil vertically.

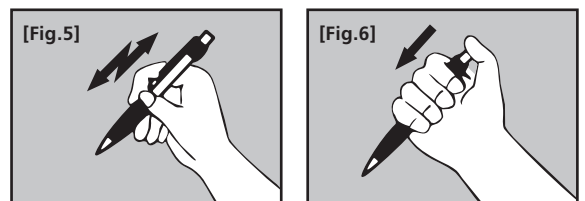
#### ● To extend lead by shaking

A single downward stroke of about 5cm of the pencil automatically causes the lead to come out about 0.5mm. [Fig.5]

#### ● To click and extend the lead

Click the knob to extend the lead for use. [Fig.6]

- \* Retract and replace lead in the same way as for the Knob Click Type.
- \* While carrying the pencil, rough shaking may cause the lead to come out.



### Guide Pipe Slide Type

In this mechanical pencil, the guide pipe is stored in the mouthpiece.

#### ● To extend the guide pipe

Press the knob completely to cause the guide pipe to come out.

#### ● To retract the guide pipe

Press the knob, and then push in the guide pipe while releasing the knob to retract the guide pipe to its position inside of the mouthpiece.

- \* Extending, retracting, or replacing the lead is the same process as with the Knob Click Type.
- \* You can write with the pencil even if no lead can be seen coming out from the guide pipe. This is a convenient way to avoid the problem of having to constantly push new lead out and prevents the lead from breaking.

## Remarks

- Please do not use this product for any purpose other than writing.
- Handle with care because the point is sharp.
- Do not swallow the parts, such as the knob, eraser, and mouthpiece.
- Keep away from children.
- Do not store in places exposed to direct sunlight or high temperatures.
- Use refill lead that matches the diameter of the mechanical pencil.  
Refilling with lead of a different diameter results in a malfunction.  
Use PILOT lead refills.  
Replacement erasers are also available. Use a genuine PILOT eraser refill.