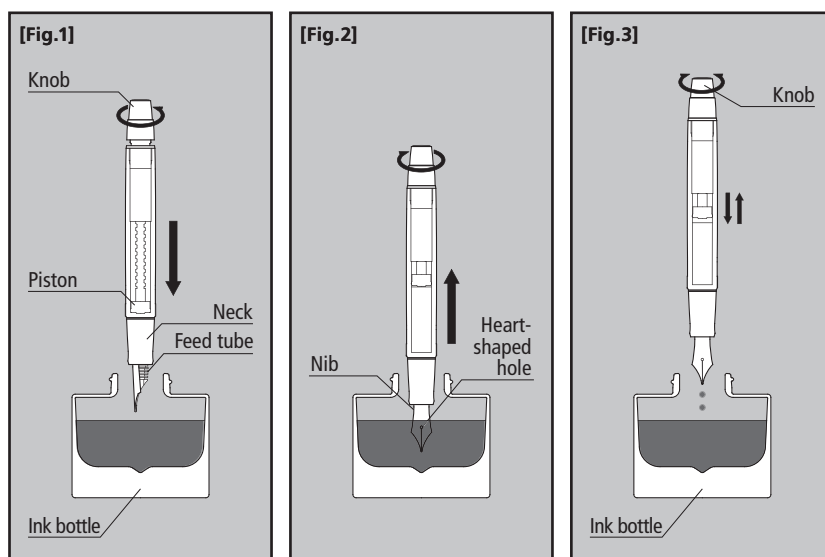


## Screw Type Fountain Pen / Use and Care Guide

### How to fill with ink

#### <Ink filling>

- (1) While holding the pen with the nib pointing downward, turn the knob counterclockwise until it stops and then lower the piston to the bottom. (If there is still ink left inside the barrel, some ink may spurt from the nib. We recommend placing the nib in the ink bottle before twisting the knob.) **[Fig.1]**
- (2) Immerse the nib in the ink until its heart-shaped hole is covered and slowly twist the knob clockwise until it stops to draw ink into the pen. (Repeat this step two or three times when the feed tube is dry.) **[Fig.2]**
- (3) Turn the knob counterclockwise and put a couple of ink drops back into the bottle. Then turn the knob clockwise again to close it. **[Fig.3]**



- \* Hold the pen with the nib pointing upward and wipe any ink on the nib or neck with a soft cloth or tissue.
- \* Be careful not to hit the bottom of the bottle with the nib point to protect the nib.

### Care and Storage

- Keep the pen out of the reach of children and away from excessive heat, cold, or direct sunlight.
- If the pen is not used regularly, drain the ink from it. Then, clean the inside by filling and draining the pen with clean water several times. Then store the pen by replacing the end cap and the main cap.
- This pen contains custom-made precision parts. Do not try to repair it yourself.

### Remarks

- Do not use except for writing.
- Keep away from children.
- Before changing the ink color, clean the inside by filling and draining the pen with clean water several times.
- It is not a quality problem, although the required force to turn the tail plug may change due to the difference in ink colors or the washing conditions.
- Some lubricant has been applied to the mechanical parts and the inside of the barrel. It does not affect the quality of the product even though the pen body may look wet or colored lubricant could accumulate around the piston.
- To prevent ink stains, keep the cap screwed tightly at all times when not writing. Keep the knob screwed tightly at all times when not filling, emptying, or cleaning the pen.
- Changes in air pressure may cause the ink to leak or gush out, so do not use this pen on a plane.
- Do not loosen the end cap too far to the left. Loosening it too much could lead to a malfunction.
- Please take care not to drop the pen because the shock could cause it to malfunction.
- Please be warned that applying chemicals, including solvents such as alcohol, causes cracks or discoloration.
- Pilot's Tsuwauro pigment ink for fountain pens is not compatible with this pen.
- Please use PILOT ink for fountain pens. Please note that mixing with other inks or old ink may cause problems.